



Reclaim control over your AI, with **PromptFusion.online**, a free customizable management interface for organizing and composing structured prompts for use with AI models. It's ideal for prompt engineers, content creators, or users who frequently work with generative AI models and need an organized workflow for reusable prompts.

AI Prompts Demystified: What you Need to Know

A well-crafted AI prompt is structured to include three essential components: the **working instructions**, the **output instructions**, and the **context**. The **working instructions** serve as the backbone of the interaction and typically consist of a persona definition, step-by-step guidance, and, when necessary, examples to clarify expectations. This ensures that the AI adopts the correct role, follows a clear sequence of actions, and responds in a meaningful way.

In PromptFusion, the working instructions are referred to as **patterns**, allowing users to define reusable templates that can be adapted to different scenarios. The **context** represents the input information provided by the user - such as a question, pasted content, or a URL - that the AI uses to tailor its response. The **output instructions** define the desired format and style of the AI's output. These may specify whether the output should be formal or conversational, or whether it should be formatted as a list, paragraph, or creative narrative. In PromptFusion, these output instructions are known as **styles** and can be toggled on or off depending on the context.

Additionally, users can further customize their prompts by selecting a preferred language and setting length limitations, such as restricting the output to a certain number of sentences or paragraphs. This **structured approach** - combining context with working and output instructions - empowers users to create precise and effective prompts, ensuring optimal interactions with AI models.

Prompt Composition and Execution

PromptFusion simplifies prompt creation by combining key elements - patterns, styles, context, language settings, and length limits - within seconds. Buttons allow **quick selection** of a pattern and style, with optional language and length adjustments. Once the prompt components are selected, a single click copies the final prompt and opens an external Large Language Model (LLM) interface, where the prompt can be pasted and executed.



Users can customize LLM URLs in their profile, enabling quick-access buttons for their preferred AI models directly within PromptFusion.

Pattern Management and Development

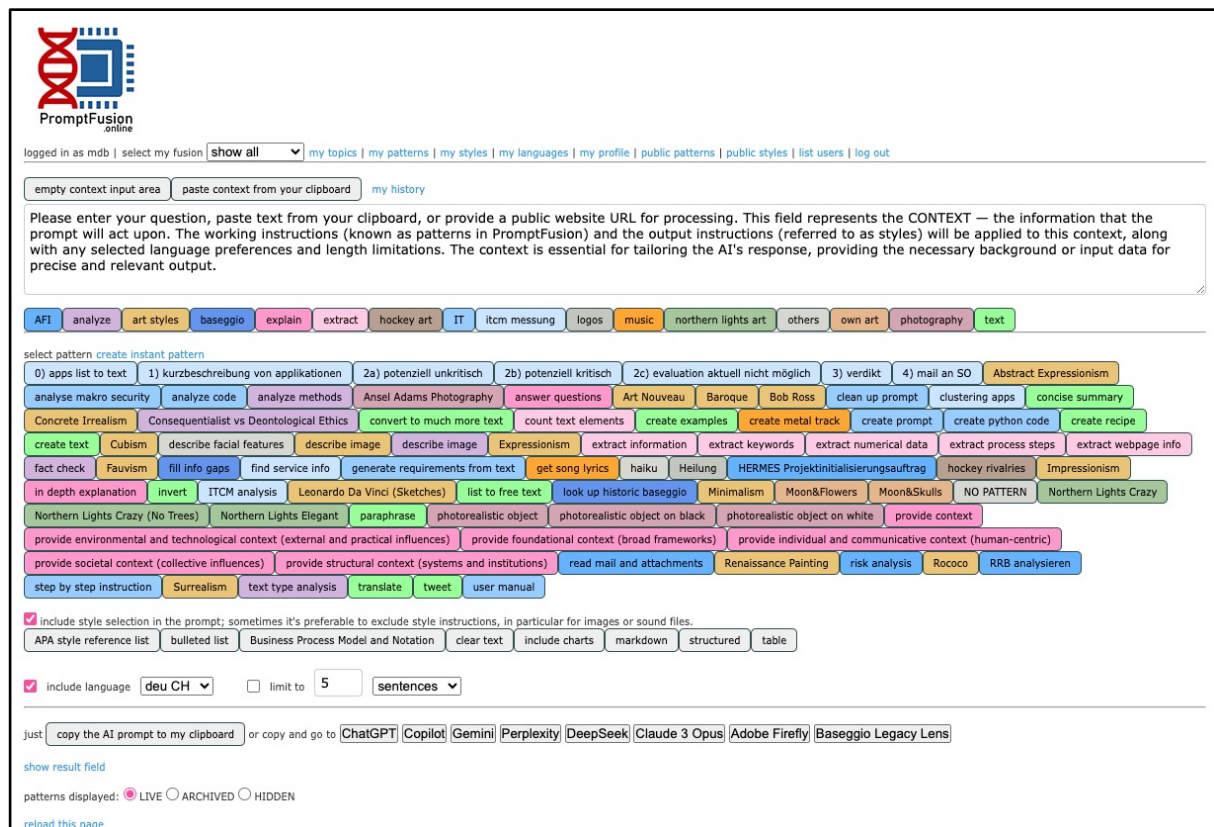
One of the key features of PromptFusion is that patterns remain **available indefinitely, well-organized, and customizable** to fit the user's individual needs. Patterns can be developed and refined over time, leading to increasingly better results.

Patterns can also be archived when they are no longer needed but should be retained for reference or reactivation. Moreover, **users can define** whether styles, language settings, and length limitations are toggled on or off in each pattern's preset. This makes prompt composition even faster - especially when the pattern already includes the desired output instructions or when no output instructions are needed, such as when generating images or other creative outputs.

The Main User Interface

Effective AI usage often involves a wide range of use cases and scenarios, each requiring multiple interactions with different tools. To support this complexity, PromptFusion provides robust organization features that allow users to tailor their workflow according to their individual preferences. Patterns can be assigned to specific **topics**, with each topic given a distinct color to make pattern buttons easily identifiable at a glance.

In addition to topic filtering, PromptFusion introduces **fusions**, which act as customizable workspaces for organizing related topics. Each topic can belong to one or multiple fusions, allowing users to create focused environments for different areas of their AI interactions - such as business tasks, hobbies, or specific output types like text summaries or image generation.



The screenshot displays the PromptFusion online interface. At the top left is the logo, a DNA helix with a circuit board. Below it, the text 'PromptFusion online' is visible. A navigation bar includes links like 'logged in as mdb', 'select my fusion', and a dropdown menu set to 'show all'. Other links include 'my topics', 'my patterns', 'my styles', 'my languages', 'my profile', 'public patterns', 'public styles', 'list users', and 'log out'.

Below the navigation bar, there's a section for context input with buttons for 'empty context input area', 'paste context from your clipboard', and 'my history'. A large text area follows with instructions: 'Please enter your question, paste text from your clipboard, or provide a public website URL for processing. This field represents the CONTEXT — the information that the prompt will act upon. The working instructions (known as patterns in PromptFusion) and the output instructions (referred to as styles) will be applied to this context, along with any selected language preferences and length limitations. The context is essential for tailoring the AI's response, providing the necessary background or input data for precise and relevant output.'

Below the context input area, there's a row of pattern buttons categorized by topic: AFI, analyze, art styles, baseggio, explain, extract, hockey art, IT, itcm messung, logos, music, northern lights art, others, own art, photography, and text. The 'text' button is highlighted in green.

Below the pattern buttons, there's a section titled 'select pattern create instant pattern'. It contains a grid of buttons for various tasks and styles, such as '0) apps list to text', '1) kurzbeschreibung von applikationen', '2a) potenziell unkritisch', '2b) potenziell kritisch', '2c) evaluation aktuell nicht möglich', '3) verdikt', '4) mail an SO', 'Abstract Expressionism', 'analyse makro security', 'analyze code', 'analyze methods', 'Ansel Adams Photography', 'answer questions', 'Art Nouveau', 'Baroque', 'Bob Ross', 'clean up prompt', 'clustering apps', 'concise summary', 'Concrete Irrealism', 'Consequentialist vs Deontological Ethics', 'convert to much more text', 'count text elements', 'create examples', 'create metal track', 'create prompt', 'create python code', 'create recipe', 'create text', 'Cubism', 'describe facial features', 'describe image', 'describe image', 'Expressionism', 'extract information', 'extract keywords', 'extract numerical data', 'extract process steps', 'extract webpage info', 'fact check', 'Fauvism', 'fill info gaps', 'find service info', 'generate requirements from text', 'get song lyrics', 'haiku', 'Heilung', 'HERMES Projektinitialisierungsauftrag', 'hockey rivalries', 'Impressionism', 'in depth explanation', 'invert', 'ITCM analysis', 'Leonardo Da Vinci (Sketches)', 'list to free text', 'look up historic baseggio', 'Minimalism', 'Moon&Flowers', 'Moon&Skulls', 'NO PATTERN', 'Northern Lights Crazy', 'Northern Lights Crazy (No Trees)', 'Northern Lights Elegant', 'paraphrase', 'photorealistic object', 'photorealistic object on black', 'photorealistic object on white', 'provide context', 'provide environmental and technological context (external and practical influences)', 'provide foundational context (broad frameworks)', 'provide individual and communicative context (human-centric)', 'provide societal context (collective influences)', 'provide structural context (systems and institutions)', 'read mail and attachments', 'Renaissance Painting', 'risk analysis', 'Rococo', 'RRB analysieren', 'step by step instruction', 'Surrealism', 'text type analysis', 'translate', 'tweet', and 'user manual'.

Below the grid, there's a checkbox 'include style selection in the prompt; sometimes it's preferable to exclude style instructions, in particular for images or sound files.' and a row of buttons: 'APA style reference list', 'bulleted list', 'Business Process Model and Notation', 'clear text', 'include charts', 'markdown', 'structured', and 'table'.

Below that, there's a checkbox 'include language' with a dropdown menu set to 'deu CH', a checkbox 'limit to' with a value of '5', and a dropdown menu set to 'sentences'.

Below the settings, there's a section for output with buttons: 'copy the AI prompt to my clipboard', 'or copy and go to', 'ChatGPT', 'Copilot', 'Gemini', 'Perplexity', 'DeepSeek', 'Claude 3 Opus', 'Adobe Firefly', and 'Baseggio Legacy Lens'.

At the bottom, there's a section titled 'show result field' with buttons: 'patterns displayed: LIVE', 'ARCHIVED', and 'HIDDEN'. Below that is a 'reload this page' button.

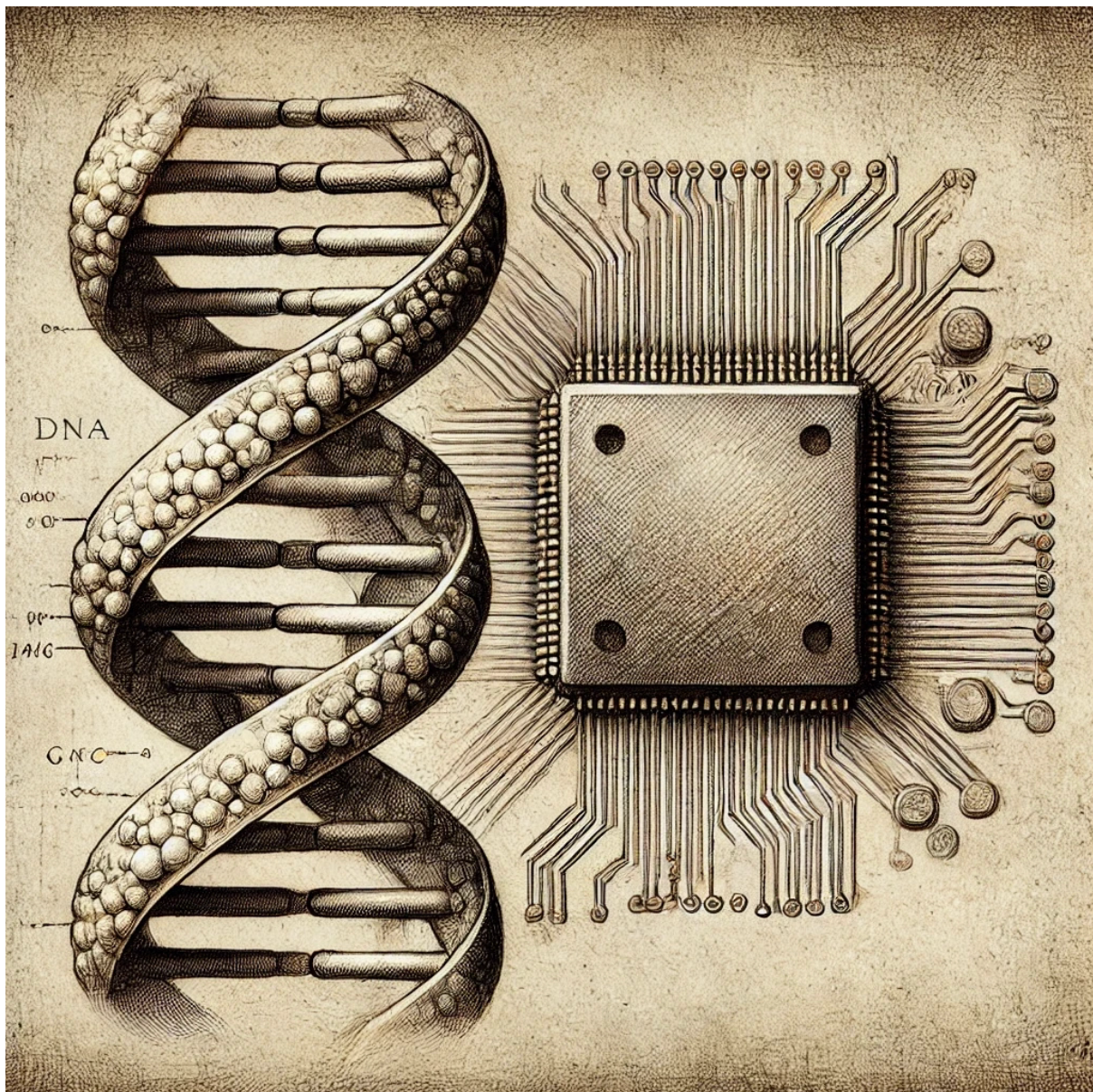
Users can define their default fusion in the profile section, so the interface automatically opens in the most relevant workspace. Switching between fusions is seamless, enabling users to quickly shift focus as needed. By organizing patterns into fusions, users can **declutter** their interface and ensure that only the most relevant patterns for their current task are displayed, making prompt composition faster, more intuitive, and better aligned with their goals.

Confidentiality and Information Security

PromptFusion is designed with user privacy and data security as top priorities. **No user data is ever shared with third parties.** The password chosen for accessing the tool is never stored in clear text - it is securely hashed using industry-standard encryption methods, ensuring that even the developer has no way of viewing or retrieving the original password.

In addition, prompt composition - including the aggregation of context, working instructions (patterns), and output instructions (styles) - happens entirely **locally** within the user's browser. All prompt compilation is executed through JavaScript functions, ensuring that the information stays strictly within the user's system. The final prompt is only temporarily stored in the system's clipboard when copied and is never saved to any database or transmitted externally.

This local-first approach gives users **full control over their data**, making PromptFusion suitable for use in sensitive or business contexts where confidentiality is crucial. The context remains entirely local, ensuring that no information leaves the user's device during the prompt development process.



Zurich, Switzerland, January 24, 2025
admin@promptfusion.online